



Queen's
UNIVERSITY

**INDIGENOUS
APPLICANT HANDBOOK**

Welcome to Territory

We acknowledge that Queen's is situated on traditional Anishinaabe and Haudenosaunee Territory. We are grateful to be able to live, learn, and work on these lands. This territory is included in the Dish With One Spoon Wampum Belt Covenant, an agreement between the Iroquois Confederacy and the Confederacy of the Ojibwe and Allied Nations to peaceably share and care for the resources around the Great Lakes. The Kingston Indigenous community continues to reflect the area's Anishinaabek and Haudenosaunee roots. There is also a significant Métis community as well as First Peoples from other Nations across Turtle Island present here today.

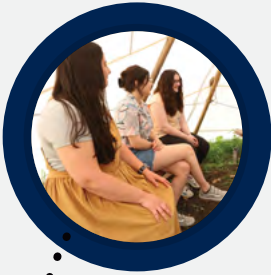
Hello, Ske:Kon, Oki, Wachay, Tansi, Ahnii

Welcome to Queen's and the territory of the Anishinaabe and Haudenosaunee people. Follow along to see what the journey of a future Queen's student looks like and what supports and services are offered to you from the application process and beyond.

Wachay, my name is Nathan. I am a member of the Moose Cree First Nation, located on the southwestern tip of James Bay (Moose Factory/Moosonee). I am here to support you throughout the application and admission process.

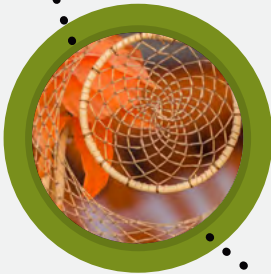


The Journey to Your Future



Build your community at Queen's

PAGE 4



Follow your dreams

PAGE 12

Find out more about our programs

Take the first step

PAGE 16

Learn how to apply



See the world!

PAGE 14

Consider an international exchange, or a term at Bader College

Build your budget

PAGE 25



What will you do next?

PAGE 37

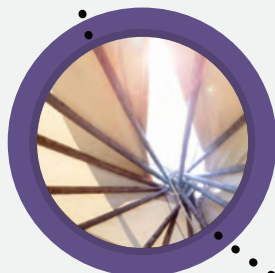
Join a community of more than 150,000 alumni when you graduate



Plan for your future

PAGE 35

Learn more about internships and career planning



Your Community at Queen's



Four Directions Indigenous Student Centre Welcomes You

The Four Directions Indigenous Student Centre (4D) is your home away from home. In two neighbouring houses, you will find a safe space, welcoming community, advice, support, and connections to resources across campus.

- Academic advising and tutoring connections
- Financial, housing, and career support
- Cultural Counsellor, offering individual and group sessions, and crisis support
- Study spaces and lounges
- Social and cultural programming
- 100+ events throughout the year
- Full kitchen facilities, food, and feasts
- Free laundry
- Library, resource, and meeting rooms

queensu.ca/fourdirections

📷 @fourdirectionsqueens



Yellow House

Yellow House is a comfortable and accountable space for students who identify as Queer, Trans, Black, Indigenous, and/or as People of Colour (QTBIPOC). We seek to engage students in initiatives that actively dismantle oppressive, racist and colonial ideologies and practices and offer a safe space to create community, to be empowered, to celebrate your identity, and to flourish.

queensu.ca/yellow-house  [@queensuyellowhouse](https://www.instagram.com/queensuyellowhouse)



Supports and Resources

Queen's Native Student Association

A student-run club that brings together a diverse group of Indigenous and non-Indigenous students who share an interest in Indigenous cultures and traditions.

 [@likeQNSA](https://www.facebook.com/likeQNSA)

 [@qnsaclub](https://www.instagram.com/qnsaclub)

Questions about Queen's?

Our Indigenous Community Outreach Coordinator is your primary contact throughout the application and admission process.

fd.recruiter@queensu.ca

Indigenous Student Admission Pathway

Queen's offers Indigenous candidates an additional admission pathway that includes support through the admission process.

[queensu.ca/admission/access/
indigenous-students](https://queensu.ca/admission/access/indigenous-students)

Financial Aid

Queen's offers grades and need-based financial awards to Indigenous students who have been verified under the Indigenous Students Verification Policy.

[queensu.ca/secretariat/
indigenous-students-verification-policy](https://queensu.ca/secretariat/indigenous-students-verification-policy)

Our advisor at 4D can help you find and apply to additional funding opportunities, and assist you with budgeting and money management.

[queensu.ca/registrar/
financial-aid/specific-students](https://queensu.ca/registrar/financial-aid/specific-students)

Stand Proud!

Queen's students, with Indigenous ancestry, can self-identify to the university at any point during their time at Queen's.

[queensu.ca/fourdirections/
current-students/self-identification](https://queensu.ca/fourdirections/current-students/self-identification)

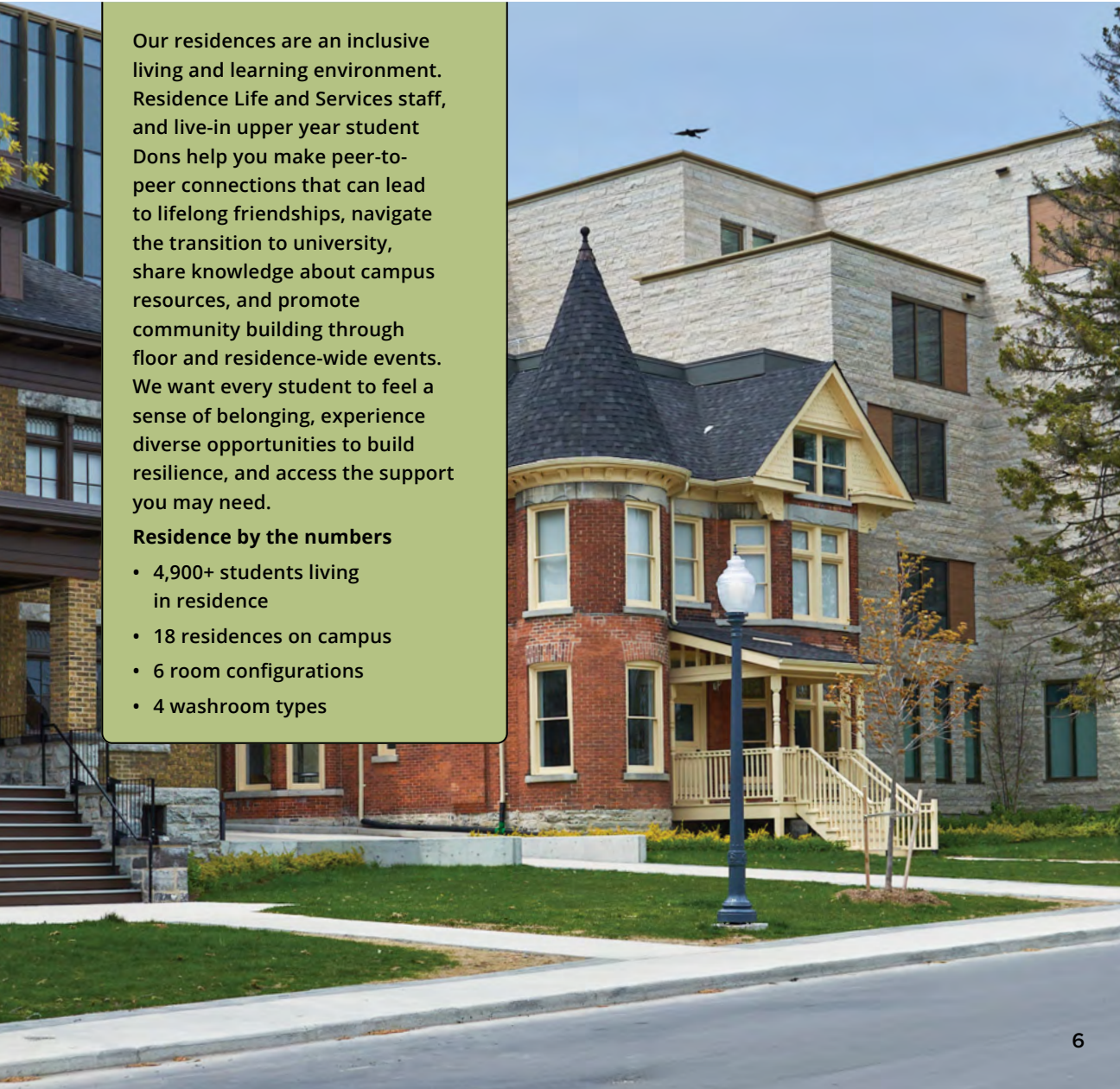
Residence

► queensu.ca/residences

Our residences are an inclusive living and learning environment. Residence Life and Services staff, and live-in upper year student Dons help you make peer-to-peer connections that can lead to lifelong friendships, navigate the transition to university, share knowledge about campus resources, and promote community building through floor and residence-wide events. We want every student to feel a sense of belonging, experience diverse opportunities to build resilience, and access the support you may need.

Residence by the numbers

- 4,900+ students living in residence
- 18 residences on campus
- 6 room configurations
- 4 washroom types



Applying for Residence

- The residence application opens in mid-March.
- To apply, you must have accepted your offer of admission.
- Submit your residence application and pay the deposit by the **June 3** deadline.

Bimaadiziwin Ka'nikonhriyo Indigenous and Allies Living and Learning Community

Living and Learning Communities (LLCs) are floors or clusters of rooms where students with similar interests live together; students can apply to live in an LLC on their residence application. Indigenous and non-Indigenous students can choose to live in the Bimaadiziwin Ka'nikonhriyo Indigenous and Allies Living and Learning Community (LLC). With an emphasis on intercultural understanding and leadership development, the Bimaadiziwin Ka'nikonhriyo LLC welcomes students who are interested in learning more about Indigenous peoples, histories, and cultures.

Queen's Community Housing

queensu.ca/residences/community-housing

There are many reasons that first-year students choose to live off-campus. Thousands of Queen's students live in the community surrounding campus in rented accommodations. Kingston is a classic university town with rental options for students near Queen's campus. Our Off-Campus Living Advisor is available to guide you in evaluating off-campus housing, tenant rights and responsibilities, and resources for moving in/out.

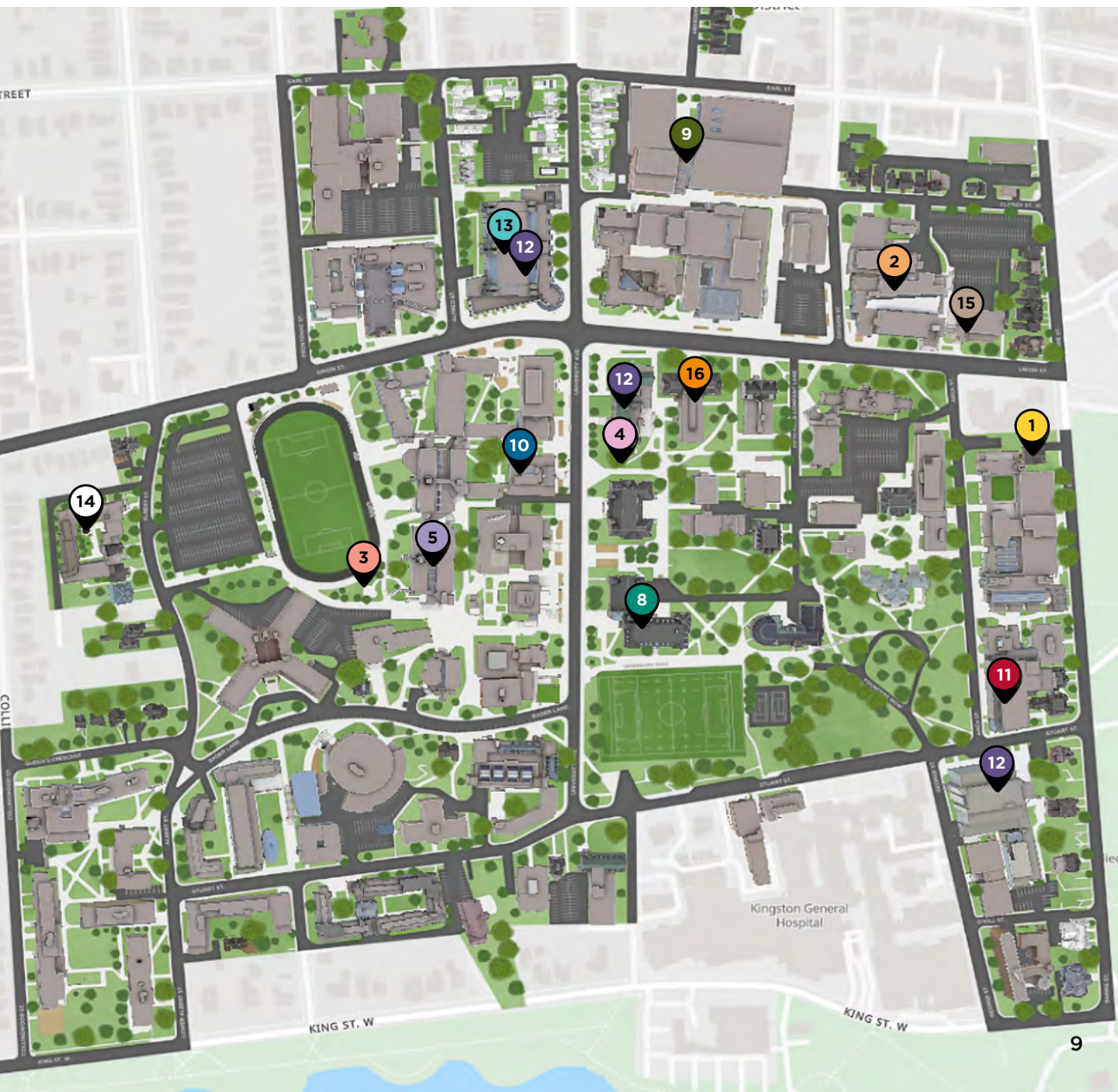
Queen's Community Housing manages university-owned off-campus student housing and offers a listing service for local landlords.



Indigenous Places and Spaces

► map.queensu.ca





Kingston

► visitkingston.ca

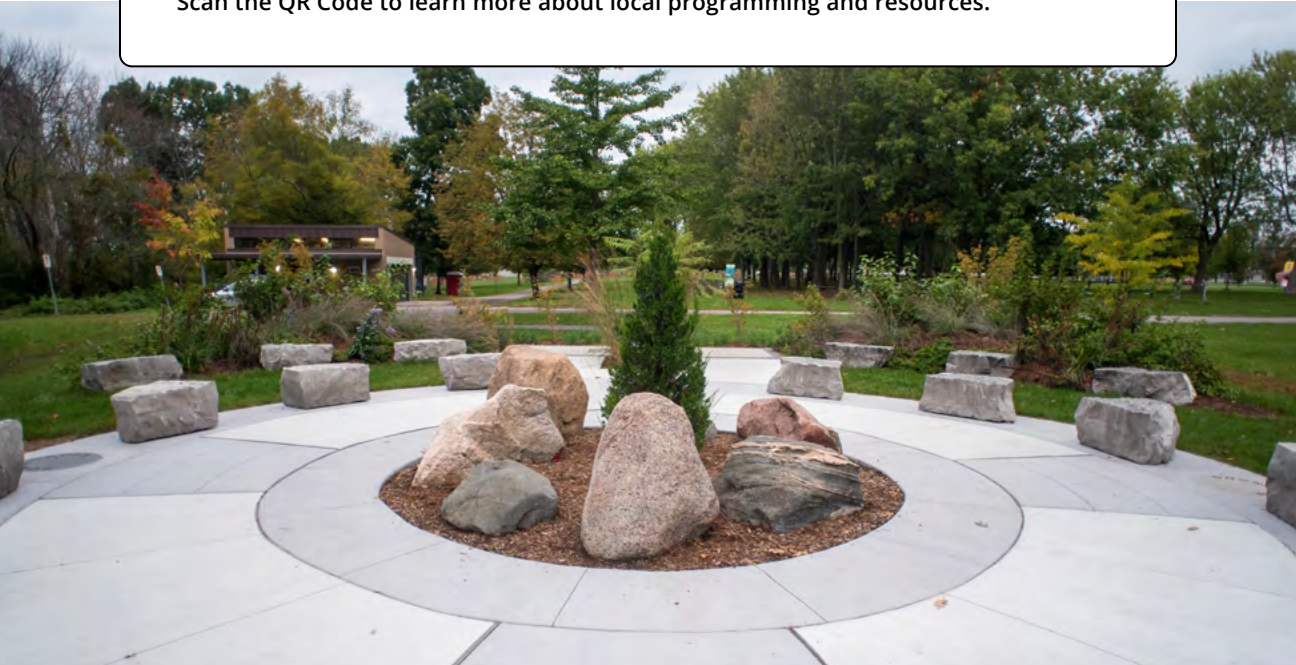
**TOP CITY
IN CANADA
TO BE A
STUDENT**
— HelloSAFE



Kingston's Indigenous Community and Resources

Kingston and the surrounding areas have a variety of programming, supports and resources available for the Indigenous community that will complement the community you have at Queen's.

Scan the QR Code to learn more about local programming and resources.



Academics

► queensu.ca/admission

Learn to Make a Difference

Education has the power to create positive change, and no matter which program you choose, you can expect to be exposed to innovative concepts and new ways of thinking. Our approach is inclusive, and we ensure that students feel supported throughout their studies at Queen's.

Faculty-Based Initiatives

Indigenous Futures in Engineering (InEng)

InEng serves students through culturally relevant student success programming, including liaison with industries particularly interested in the development of Indigenous engineers through summer employment, internships, and permanent positions.

qeng.one/indigenous

STEM Indigenous Academics (STEMInA)

Through the STEMInA program, Indigenous students in STEM-based degree programs have access to tutoring and exam prep sessions, along with specialized weekly events and conferencing opportunities.

engineering.queensu.ca/outreach/stemina

Indigenous Teacher Education Program (ITEP)

ITEP provides an opportunity for teacher candidates to specialize in Indigenous education, and qualifies graduates for Ontario College of Teachers certification. The ITEP Office provides academic and cultural support and hosts workshops, lectures, and events.

educ.queensu.ca/teacher-education/consecutive/itep-community

Programs

ARTS AND SCIENCE

Applied Economics
 Art History
 Astrophysics
 Biochemistry
 Biology
 Biology and Mathematics
 Biology and Psychology
 Biomedical Computing
 Biotechnology
 Black Studies
 Chemistry
 Classics and Archaeology
 Classical Studies
 Earth Systems Science
 Cognitive Science
 Computer Science
 Computing and the
 Creative Arts
 Computing, Mathematics, and
 Analytics
 Drama
 Economics
 Employment Relations
 English Language and
 Literature*
 Environmental Science
 Environmental Studies
 Film and Media
 French Studies
 Gender Studies
 Geography
 Geological Sciences
 German Studies
 Global Development Studies*
 Health Studies
 Hispanic Studies
 History*

Indigenous Studies
 Italian
 Jewish Studies
 Kinesiology
 Languages, Literatures,
 and Cultures
 Liberal Studies**
 Life Sciences*
 Linguistics
 Mathematics
 Mathematical Physics
 Media and Performance
 Production
 Music
 Music Theatre
 Philosophy
 Physics
 Politics, Philosophy,
 and Economics
 Political Studies
 Psychology*
 Religious Studies
 Sociology
 Software Design
 Spanish and Latin
 American Studies
 Statistics
 World Language Studies

BADER COLLEGE (UK CAMPUS)

Arts
 Health Sciences
 Science
 Concurrent Education/Arts
 Concurrent Education/Science

CONCURRENT EDUCATION

Arts

Arts at Bader College
 French
 Kinesiology
 Music
 Science
 Science at Bader College

ENGINEERING

Chemical Engineering
 Civil Engineering
 Computer Engineering+
 Electrical Engineering+
 Engineering Chemistry
 Engineering Physics
 Geological Engineering
 Mathematics and Engineering
 Mechanical and Materials
 Engineering
 Mechatronics and Robotics
 Engineering
 Mining Engineering

COMMERCE/BUSINESS

HEALTH SCIENCES*

NURSING SCIENCE

QUEEN'S ACCELERATED ROUTE TO MEDICAL SCHOOL (QuARMS)

QBRIDGE - ENGLISH LANGUAGE BRIDGING PROGRAM

CONSECUTIVE EDUCATION***

GRADUATE STUDIES***

LAW***

MEDICINE***

*Also available online **Available online only ***Requires prior university study

+ With Innovation Stream option

Bader College

► queensu.ca/badercollege/academics



Your Pathway to Global Learning at Queen's University!

Embark on an extraordinary educational journey at Bader College, your gateway to Europe at Queen's University, and join a diverse community with students and faculty from around the world.

Immerse yourself in the historic charm of Herstmonceux Castle Estate in East Sussex, England – your home away from home. Whether you are there for your entire first year or a single upper-year term, our inclusive and supportive environment accelerates your learning.

Teaching is enhanced by built-in experiential and active learning activities, co-curricular programming, field studies, and a multi-day mid-term academic and cultural expedition to an important UK or European destination, such as Edinburgh, or Paris.

At Bader College:

- Enjoy a personalized learning experience with small class sizes and close contact with your professors.
- Blend academic theory, practical exposure, and a robust co-curricular program for a well-rounded education.
- Join a tight-knit, supportive campus where lifelong friendships flourish.
- Benefit from dedicated on-campus student services that support academic confidence and personal growth.
- Create a global network while collaborating with professors and peers from around the world.

International Opportunities

► queensu.ca/international/study/exchange



Where will your exchange take you?

Queen's has exchange agreements with 220 universities in 50+ countries!

- Expose yourself to diverse views and perspectives
- Immerse yourself in a different culture and in different ways of life and ways of knowing
- Gain intercultural skills and knowledge
- Expand your network of friends and contacts

Explore the options: queensu.ca/international/study/exchange

"I studied at the University College Maastricht (UCM) in the Netherlands for six months in 2022. It was easily the highlight of my Queen's career, if not one of the highlights of my life. I think one of the key benefits of an exchange is the independence you develop while living abroad. Building a life in a new country was incredibly empowering. It gave me a sense of confidence that I didn't expect."

Kenzie, Bachelor of Arts, Class of 2024

How to Apply

► queensu.ca/admission/applying/next-steps

- 1 Apply online
► queensu.ca/admission/applying/next-steps
- 2 **Add @queensu.ca as a safe sender**
Ensure you can receive our emails because that's how we will communicate with you
- 3 After we send your Student ID, activate your NetID account
► netid.queensu.ca/selfservice
- 4 Submit any supplementary information that we request on the To-Do List in your SOLUS Student Centre
- 5 Check your To-Do List, and Application Status and complete your Financial Aid and Awards Profile ► my.queensu.ca

Pathways to Queen's

Admission Pathway for Indigenous Students

We offer Indigenous candidates an additional and alternative pathway for admission to the first year of a full-time, first-entry undergraduate degree program through the Indigenous Admission Pathway.

Indigenous candidates apply through the Ontario Universities' Application Centre (OUAC) and self-identify as having Indigenous ancestry. Candidates must also submit verification of Indigenous status to fd.recruiter@queensu.ca. Candidates must meet the general admission requirements for each program and deadlines for undergraduate admission and submit any supplementary information required to complete the application (details, including due dates, are on each applicant's SOLUS Student Centre).

If you are interested in applying through this pathway, or need more information, please email [**fd.recruiter@queensu.ca**](mailto:fd.recruiter@queensu.ca).

Learn more:

[**queensu.ca/admission/access/indigenous-students**](https://queensu.ca/admission/access/indigenous-students)

First-Generation Student Admission Pathway

The First-Generation Admission Pathway offers comprehensive wrap-around support for students pursuing post-secondary education. Eligible students will receive support with OUAC and general applications, program and academic advising, financial planning (OSAP, scholarships and bursaries), and one-to-one advising. To be eligible, students will be the first in their family to access a post-secondary education (excluding siblings), and their parents/guardians have not attained a post-secondary education. Students will also have to be registered with one of our affiliated community partners.

Learn more about applying through this pathway and see a complete list of our community partners:

[**queensu.ca/admission/access/first-generation-student**](https://queensu.ca/admission/access/first-generation-student)

Admission Requirements

Canadian Education Systems

General Requirements	
Ontario	The Ontario Secondary School Diploma (OSSD), and six 4U/4M courses. Students must have ENG4U plus five other 4U/4M courses. Students in francophone schools may offer EAE4U or FRA4U in place of ENG4U.
British Columbia /Yukon	Provincial High School Diploma. Four academic courses including English Studies 12 or English First Peoples 12.
Alberta/NWT /Nunavut	Provincial High School Diploma. Five academic courses numbered 30 or 31, including English 30-1.
Saskatchewan	Provincial High School Diploma. Five academic courses, including English 30A and 30B. Note: Both English 30A and 30B (or Français 30) are required for admission. Queen's uses the higher of the two grades in calculating the admission average. ² Mathematics 30B can be used in place of Pre-Calculus 30
Manitoba	Provincial High School Diploma. Five academic courses including an English Focus course at the 40S level.
Quebec Cégep	Candidates who will have completed at least 12 academic subjects (excluding physical education courses that begin with 109) in a pre-university program are eligible for admission to year one. Those who completed their DEC in a two-year pre-university program are also eligible for first-year admission and receive a maximum of 18 credit units. Students from French CEGEPs may offer two courses in Français in lieu of the English pre-requisites for all programs except Nursing, which requires a minimum of one semester of an English literature course (that begin with 603).
New Brunswick	Provincial High School Diploma. Five academic courses, including English 121 or 122. ³ Calculus 120 can be used in place of Pre-Calculus 12A and 12B
Nova Scotia	Provincial High School Diploma. Five academic courses, including English 12 or English 12: African Heritage. ⁴ Calculus 12 can be used in place of Pre-Calculus 12
Prince Edward Island	Provincial High School Diploma. Five academic courses, including English 621 or 611. ⁵ Mathematics 611 can be used in place of Mathematics 621A or 621B
Newfoundland and Labrador	Provincial High School Diploma. Six two-credit Grade 12 academic courses including English 3201.
Faculty of Arts and Science	
	Arts (QA) Arts (at Bader College) (QIA) Concurrent Education/Arts (QB) Concurrent Education/Arts (at Bader College) (QIB) Concurrent Education/Arts - French (QBF)
Ontario	English 4U. Additional five required courses may be either 4U or 4M.
British Columbia /Yukon	English Studies 12, plus three additional academic Grade 12 courses.
Alberta/NWT /Nunavut	English 30-1, plus four additional academic 30 or 31 level courses.
Saskatchewan	English 30A and 30B, plus four additional academic courses at the 30 level.
Manitoba	English 40S, plus four additional academic 40S level courses.
Quebec Cégep	English - two courses.

New Brunswick	English 4U. Additional five required courses may be either 4U or 4M.
Nova Scotia	English Studies 12, plus three additional academic Grade 12 courses.
Prince Edward Island	English 30-1, plus four additional academic 30 or 31 level courses.
Newfoundland and Labrador	English 30A and 30B, plus four additional academic courses at the 30 level.
	Science (QS) Science (at Bader College) (QIS) Concurrent Education/Science (QF) Concurrent Education/Science (at Bader College) (QIF) Life Sciences and Biochemistry (QL)
Ontario	English 4U, Advanced Functions 4U, Calculus and Vectors 4U, plus two of Biology 4U, Chemistry 4U, or Physics 4U. Additional required course may be 4U or 4M.
British Columbia /Yukon	English Studies 12, Pre-Calculus 12, plus two of Anatomy and Physiology 12, Calculus 12, Chemistry 12 or Physics 12. Calculus 12 is recommended.
Alberta/NWT /Nunavut	English 30-1, Mathematics 30-1 or Mathematics 31, plus two of Biology 30, Chemistry 30, Mathematics 30-1 or Mathematics 31 (whichever is not included above), or Physics 30, and one additional academic 30 or 31 level course.
Saskatchewan	English 30A and 30B, Pre-Calculus 30², plus two of Biology 30, Calculus 30, Chemistry 30, or Physics 30 and one additional academic 30 level course. Calculus 30 is recommended.
Manitoba	English 40S, Pre-Calculus 40S, plus two of Biology 40S, Chemistry 40S, Applied Mathematics 40S, or Physics 40S, and one additional academic 40S level course.
Quebec Cégep	English - two courses, and Mathematics NYA, and one additional Math from either Mathematics NYB or NYC, and two courses from each of two disciplines; Biology NYA, II; Chemistry NYA, NYB; Physics NYA, NYB, NYC.
New Brunswick	English 121 or 122, Pre-Calculus 12A and Pre-Calculus 12B³, plus two of Biology 121 or 122, Calculus 120, Chemistry 121 or 122, or Physics 121 or 122.
Nova Scotia	English 12, Pre-Calculus 12⁴, plus two of Biology 12, Calculus 12, Chemistry 12, or Physics 12; and one additional academic Grade 12 course.
Prince Edward Island	English 621 or 611, Mathematics 621A or 621B⁵, plus two of Biology 621, Chemistry 621, or Physics 621; and one additional academic Grade 12 course.
Newfoundland and Labrador	English 3201, Mathematics 3200 or 3208, plus two of Biology 3201, Chemistry 3202, Mathematics 3200 or 3208 (whichever is not included above), or Physics 3204; and two additional academic Grade 12 courses.
	Computing (QD)
Ontario	English 4U, Advanced Functions 4U, and Calculus and Vectors 4U. Additional three required courses may be either 4U or 4M.
British Columbia /Yukon	English Studies 12, Pre-Calculus 12, plus two additional academic Grade 12 courses. Calculus 12 is recommended.
Alberta/NWT /Nunavut	English 30-1, Mathematics 30-1, plus three additional academic 30 or 31 level courses. Mathematics 31 is recommended.
Saskatchewan	English 30A and 30B, Pre-Calculus 30², plus three additional academic 30 level courses.
Manitoba	English 40S, Pre-Calculus 40S, plus three additional academic 40S level courses.
Quebec Cégep	English - two courses; two of Mathematics NYA, NYB or NYC.
New Brunswick	English 121 or 122, Pre-Calculus 12A and Pre-Calculus 12B³ plus two additional academic Grade 12 courses.
Nova Scotia	English 12, Pre-Calculus 12⁴, plus three additional academic Grade 12 courses.
Prince Edward Island	English 621 or 611, Mathematics 621A or 621B⁵, plus three additional academic Grade 12 courses.
Newfoundland and Labrador	English 3201, Mathematics 3200 or 3208, plus four additional academic Grade 12 courses.

	Music (QM) Concurrent Education/Music (QMM)
Ontario	English 4U. Additional five required courses may be 4U or 4M. Personal audition, interview and theory test.
British Columbia /Yukon	English Studies 12, plus three additional academic Grade 12 courses. Personal audition, interview and theory test.
Alberta/NWT /Nunavut	English 30-1, plus four additional academic 30 or 31 level courses. Personal audition, interview and theory test.
Saskatchewan	English 30A and 30B, plus four additional academic courses at the 30 level. Personal audition, interview and theory test.
Manitoba	English 40S, plus four additional academic 40S level courses. Personal audition, interview and theory test.
Quebec Cégep	English - two courses. Personal audition, interview and theory test.
New Brunswick	English 121 or 122, Pre-Calculus 12A and Pre-Calculus 12B³, plus two of Biology 121 or 122, Calculus 120, Chemistry 121 or 122, or Physics 121 or 122.
Nova Scotia	English 12, plus four additional academic Grade 12 courses. Personal audition, interview and theory test.
Prince Edward Island	English 621 or 611, plus four additional academic Grade 12 courses. Personal audition, interview and theory test.
Newfoundland and Labrador	English 3201, plus five additional academic Grade 12 courses. Personal audition, interview and theory test.
	Music Theatre (QMT)
Ontario	English 4U. Additional five required courses may be either 4U or 4M. Personal audition.
British Columbia /Yukon	English Studies 12, plus three additional academic Grade 12 courses. Personal audition.
Alberta/NWT /Nunavut	English 30-1, plus four additional academic 30 or 31 level courses. Personal audition.
Saskatchewan	English 30A and 30B, plus four additional academic courses at the 30 level. Personal audition.
Manitoba	English 40S, plus four additional academic 40S level courses. Personal audition.
Quebec Cégep	English - two courses. Personal audition.
New Brunswick	English 121 or 122, plus four additional academic Grade 12 courses. Personal audition.
Nova Scotia	English 12 plus four additional academic Grade 12 courses. Personal audition.
Prince Edward Island	English 621 or 611, plus four additional academic Grade 12 courses. Personal audition.
Newfoundland and Labrador	English 3201, plus five additional academic Grade 12 courses. Personal audition.
	Kinesiology (QK) Concurrent Education/Kinesiology (QKF)
Ontario	English 4U, Advanced Functions 4U, Biology 4U, plus two of Calculus and Vectors 4U, Chemistry 4U or Physics 4U. Additional required course may be 4U or 4M.
British Columbia /Yukon	English Studies 12, Anatomy and Physiology 12, Pre-Calculus 12, plus one of Calculus 12, Chemistry 12, or Physics 12.
Alberta/NWT /Nunavut	English 30-1, Biology 30, Mathematics 30-1 or Mathematics 31, plus two of Chemistry 30, Physics 30, Mathematics 30-1 or Mathematics 31 (whichever is not included above).
Saskatchewan	English 30A and 30B, Biology 30, Pre-Calculus 30², plus two of Calculus 30, Chemistry 30, or Physics 30.
Manitoba	English 40S, Biology 40S, Pre-Calculus 40S, plus two of Applied Mathematics 40S, Chemistry 40S, or Physics 40S.

Quebec Cégeg	English - two courses, Biology NYA, II, Mathematics NYA, plus two courses from each of two disciplines: Chemistry NYA, NYB; Mathematics NYB, NYC; Physics NYA, NYB, NYC.
New Brunswick	English 121 or 122, Biology 121 or 122, Pre-Calculus 12A and Pre-Calculus 12B ³ , plus one of Calculus 120, Chemistry 121 or 122, or Physics 121 or 122.
Nova Scotia	English 12, Biology 12, Pre-Calculus 12 ⁴ , plus two of Calculus 12, Chemistry 12, or Physics 12.
Prince Edward Island	English 621 or 611, Biology 621, Mathematics 621A or 621B ³ , Chemistry 621 and Physics 621.
Newfoundland and Labrador	English 3201, Biology 3201, Mathematics 3200 or 3208, plus two of Chemistry 3202, Mathematics 3200 or 3208 (whichever is not included above), or Physics 3204; and one additional academic Grade 12 course.
Smith School of Business	
	Commerce (QC)
Ontario	English 4U, Calculus and Vectors 4U, and one additional 4U Mathematics course, with minimum grades of 80% in these three prerequisite courses. Additional three required courses may be either 4U or 4M. No more than two 4M courses from the same discipline. Supplementary Essay.
British Columbia /Yukon	English Studies 12, Calculus 12 or Pre-Calculus 12 with minimum grades of 80% in these prerequisite courses, and two additional academic Grade 12 courses. Supplementary Essay.
Alberta/NWT /Nunavut	English 30-1, Mathematics 30-1, Mathematics 31 with minimum grades of 80% in these prerequisite courses; plus two additional 30 or 31 level courses. Supplementary Essay.
Saskatchewan	English 30A and 30B, Calculus 30 or Pre-Calculus 30 ² with minimum grades of 80% in these two prerequisite subjects; plus three additional academic 30 level courses. Supplementary Essay.
Manitoba	English 40S, Pre-Calculus 40S with minimum grades of 80% in these two prerequisites courses; plus three additional 40S level courses. Supplementary Essay.
Quebec Cégeg	English - two courses, two of Mathematics NYA, NYB, NYC with minimum grades of 80% in these prerequisite subjects. Supplementary Essay.
New Brunswick	English 121 or 122, Pre-Calculus 12A and Pre-Calculus 12B ³ with minimum grades of 80% in these three prerequisite courses, plus two additional academic Grade 12 courses. Supplementary Essay.
Nova Scotia	English 12 and Pre-Calculus 12 ⁴ with minimum grades of 80% in these two prerequisite courses, plus three additional academic Grade 12 courses. Supplementary Essay.
Prince Edward Island	English 621 or 611, Mathematics 621A or 621B ³ , with minimum grades of 80% in these two prerequisite courses, plus three additional academic Grade 12 courses. Supplementary Essay.
Newfoundland and Labrador	English 3201 and Mathematics 3208 with minimum grades of 80% in these two prerequisite courses, plus four additional academic Grade 12 courses. Supplementary Essay.
Faculty of Engineering and Applied Science ¹	
	Engineering (QE) Computer or Electrical Engineering-Innovation (QEC) Mechatronics and Robotics (QEM)
Ontario	English 4U, Calculus and Vectors 4U, Chemistry 4U, Physics 4U and Advanced Functions 4U.
British Columbia /Yukon	English Studies 12, Calculus 12 or Pre-Calculus 12, Physics 12 and Chemistry 12.
Alberta/NWT /Nunavut	English 30-1, Chemistry 30, Physics 30, Mathematics 30-1, and Mathematics 31.
Saskatchewan	English 30A and 30B , Calculus 30 (if available), Chemistry 30, Pre-Calculus 30 ² , Physics 30.
Manitoba	English 40S , Chemistry 40S, Pre-Calculus 40S, and Physics 40S.
Quebec Cégeg	English - two courses Chemistry NYA, NYB; two of Mathematics NYA, NYB, NYC; two of Physics NYA, NYB, NYC.
New Brunswick	English 121 or 122 Pre-Calculus 12A and Pre-Calculus 12B ³ , Chemistry 121 or 122, and Physics 121 or 122.
Nova Scotia	English 12, Pre-Calculus 12 ⁴ , Chemistry 12, and Physics 12.

¹ Engineering admission average is calculated using only the prerequisite subjects.

Prince Edward Island	English 621 or 611, Chemistry 621, Mathematics 621A or 621B ⁵ , and Physics 621.
Newfoundland and Labrador	English 3201, Chemistry 3202, Mathematics 3208, and Physics 3204.
Faculty of Health Sciences	
Health Sciences (QH) Health Sciences (at Bader College) (QIH)	
Ontario	English 4U with a minimum grade of 80%, Biology 4U, Chemistry 4U, plus any 4U Mathematics course. Additional two required courses may be either 4U or 4M. Supplementary Essay.
British Columbia /Yukon	English Studies 12 with a minimum grade of 80%, Anatomy and Physiology 12, Chemistry 12, plus one of Pre-Calculus 12, Calculus 12 or Foundations of Math 12. Supplementary Essay.
Alberta/NWT /Nunavut	English 30-1 with a minimum grade of 80%, Biology 30, Chemistry 30, one of Mathematics 30-1, 30-2 or 31, plus one additional academic 30 or 31 level course. Supplementary Essay.
Saskatchewan	English 30A and 30B with a minimum grade of 80%, Biology 30, Chemistry 30, one of Calculus 30, Pre-Calculus 30, Foundations of Math 30 or Mathematics 30B, plus one additional academic 30 level course. Supplementary Essay.
Manitoba	English 40S with a minimum grade of 80%, Biology 40S, Chemistry 40S, any 40S Mathematics, plus one additional 40S level course. Supplementary Essay.
Quebec Cégep	English - two courses with minimum grades of 80%; Biology NYA, II; Chemistry NYA, NYB; Mathematics-two courses. Supplementary Essay.
New Brunswick	English 121 or 122 with a minimum grade of 80%, Biology 121 or 122, Chemistry 121 or 122, any Grade 12 Mathematics (except Financial and Workplace Math 120), plus one additional academic Grade 12 course. Supplementary Essay.
Nova Scotia	English 12 with a minimum grades of 80%, Biology 12, Chemistry 12, any Grade 12 Mathematics, plus one additional academic Grade 12 course. Supplementary Essay.
Prince Edward Island	English 621 or 611 with minimum grade of 80%, Biology 621, Chemistry 621, one of Mathematics 621A or 621B⁵, plus one additional Grade 12 course. Supplementary Essay.
Newfoundland and Labrador	English 3201 with a minimum grade of 80%, Biology 3201, Chemistry 3202, one of Mathematics 3200, 3201, or 3208; plus two additional academic Grade 12 courses. Supplementary Essay.
Nursing (QN)	
Ontario	English 4U with a minimum grade of 75%, Biology 4U, Chemistry 4U, plus any 4U Mathematics course. Additional two required courses may be either 4U or 4M. Supplementary Essay.
British Columbia /Yukon	English Studies 12 with a minimum grade of 75%, Anatomy and Physiology 12, Chemistry 12, plus one of Pre-Calculus 12, Calculus 12 or Foundations of Math 12. Supplementary Essay
Alberta/NWT /Nunavut	English 30-1 with a minimum grade of 75%, Biology 30, Chemistry 30, one of Mathematics 30-1, 30-2 or 31, plus one additional academic 30 or 31 level course. Supplementary Essay.
Saskatchewan	English 30A and 30B with a minimum grade of 75%, Biology 30, Chemistry 30, one of Calculus 30, Pre-Calculus 30, Foundations of Math 30 or Mathematics 30B, plus one additional academic 30 level course. Supplementary Essay.
Manitoba	English 40S with a minimum grade of 75%, Biology 40S, Chemistry 40S, any 40S Mathematics, plus one additional 40S level course. Supplementary Essay.
Quebec Cégep	English - two courses with minimum grades of 75%; Biology NYA, II; Chemistry NYA, NYB; Mathematics-two courses. Supplementary Essay.
New Brunswick	English 121 or 122 with a minimum grade of 75%, Biology 121 or 122, Chemistry 121 or 122, any Grade 12 Mathematics (except Financial and Workplace Math 120), plus one additional academic Grade 12 course. Supplementary Essay.
Nova Scotia	English 12 with a minimum grades of 75%, Biology 12, Chemistry 12, any Grade 12 Mathematics, plus one additional academic Grade 12 course. Supplementary Essay.
Prince Edward Island	English 621 or 611 with minimum grade of 75%, Biology 621, Chemistry 621, one of Mathematics 621A or 621B⁵, plus one additional Grade 12 course. Supplementary Essay.
Newfoundland and Labrador	English 3201 with a minimum grade of 75%, Biology 3201, Chemistry 3202, one of Mathematics 3200, 3201, or 3208; plus two additional academic Grade 12 courses. Supplementary Essay.

Admission Requirements

Baccalaureate Systems

General Requirements	French Baccalearéate	International Baccalaureate
	Completion of the Baccalauréat du Second Degre program.	In order to be considered for admission, IB Diploma candidates must meet the following requirements: Complete the full IB Diploma with passes in six subjects with three at the Higher Level, no mark lower than 3, and a minimum grade total of 28 (excluding bonus points).
Programs		
Faculty of Arts and Science / Faculty of Education		
Arts (QA) Arts (at Bader College) (QIA) Concurrent Education/Arts (QB) Concurrent Education/Arts (at Bader College) (QIB) Concurrent Education/Arts - French (QBF)	Anglais/Français.	English
Science (QS) Science (at Bader College) (QIS) Concurrent Education/Science (QF) Concurrent Education/Science (at Bader College) (QIF) Life Sciences and Biochemistry (QL)	Terminale Mathematics Specialty, and ONE of: Physics-Chemistry Specialty or Life and Earth Sciences Specialty.	English, Mathematics, plus two of Biology, Chemistry, or Physics. Please Note: Mathematics Applications and Interpretations SL is not an acceptable prerequisite.
Computing (QD)	Terminale Mathematics Specialty.	English and Mathematics. Please Note: Mathematics Applications and Interpretations SL is not an acceptable prerequisite.
Music Theatre (QMT)	Anglais/Français. Personal audition.	English. Personal audition.

Music (QM) Concurrent Education/Music (QMM)	Anglais/Français. Personal audition, interview and theory test.	English. Personal audition, interview and theory test.
Kinesiology (QK) Concurrent Education/Kinesiology (QKF)	Terminale Mathematics Specialty and Life and Earth Sciences Specialty.	English, Mathematics, Biology, plus one of Chemistry or Physics or HL Sports, Exercise and Health Science. Please Note: Mathematics Applications and Interpretations SL is not an acceptable prerequisite.
Smith School of Business		
Commerce (QC)	Terminale Mathematics Specialty. Minimum language (Anglais/Français) and Mathematics grades of 12. Supplementary Essay.	Mathematics and English. Minimum English and Mathematics score of 5. (Predicted/final). Please Note: Mathematics Applications and Interpretations SL is not an acceptable prerequisite. Supplementary Essay.
Faculty of Engineering and Applied Science		
Engineering (QE) Computer or Electrical Engineering- Innovation (QEC) Mechatronics and Robotics (QEM)	Terminale Mathematics Specialty and Physics- Chemistry Specialty. The Engineering admission average is calculated using only the prerequisite subjects.	Mathematics, Chemistry, Physics and English. The Engineering admission average is calculated using only the prerequisite subjects. Please Note: Mathematics Applications and Interpretations SL is not an acceptable prerequisite.
Faculty of Health Sciences		
Health Sciences (QH) Health Sciences (at Bader College) (QIH)	Complementary Mathematics. Life and Earth Sciences Specialty, and Physics-Chemistry Specialty. Anglais minimum grade of 12. Supplementary Essay.	Biology, Chemistry, English and Mathematics. Minimum English score of 5. (Predicted/final). Supplementary Essay.
Nursing (QN)	Complementary Mathematics. Life and Earth Sciences Specialty, and Physics-Chemistry Specialty. Anglais minimum grade of 11. Supplementary Essay	Biology, Chemistry, English and Mathematics. Minimum English score of 4. (Predicted/final). Supplementary Essay.

Paying for Your Queen's Education

Domestic Students

(Canadian Citizens, Permanent Residents, Protected Persons)



Approximate Cost of First Year		
Program	Ontario Tuition & Fees (Total)*	Non-Ontario Tuition & Fees (Total)*
Arts and Science	\$7,481	\$8,104
Computing	\$8,293	\$8,637
Commerce	\$17,757	\$19,426
Concurrent Education	\$8,370	\$8,894
Engineering	\$13,425	\$14,646
Health Sciences	\$7,461	\$8,084
Nursing	\$7,504	\$8,127

* Approximate Tuition and Fees are based on 2023-24 fee schedules. Tuition and Residence is charged on a per-term basis. Visit queensu.ca/registrar/tuition-fees for detailed tuition and fees for all undergraduate programs.



Bader College First-Year Program in England	
Tuition and Experiential Learning	\$11,496
Total Residence Fee**	\$33,216
Total Program Fee***	\$44,712

** Total residence fee is based on a twin room, including airport transfers, meal plan, student activities, residential student support and local travel.

*** Based on 2023-24 Bader College First Year Program Fee schedule. For further details about this inclusive Bader College Program Fee, visit the Registrar's website: queensu.ca/registrar/tuition-fees




Living Expenses on Campus	Single Room*
Total Residence Fee	\$16,953
Food	Included in Residence Fee
Books and Supplies	\$1,600
Personal Expenses	\$2,415
Total	\$20,968

* The 2023-24 Total Residence Fee depicted above is based on residence fees for a single room type, meal plan, and additional residence fees (Student Council Fee, Resnet, Flex \$). Visit queensu.ca/residences for information about the various room types available in residence and associated residence fees.

Financial Aid and Awards for Domestic Students

► queensu.ca/registrar/financial-aid



Our comprehensive financial aid and awards programs reflect Queen's long history of promoting access to university for all students who qualify. Programs include need-based bursaries, scholarships, and various other awards. Students may also be eligible for government student assistance programs.

Applying for Scholarships, Awards and Bursaries is easy!

Simply complete your Queen's Financial Aid and Awards Profile and you will automatically be considered for most of the awards included in our financial aid package. You will find the profile form in SOLUS after you apply for admission. Filling it out is quick and easy!

After you complete the Queen's Financial Aid and Awards Profile, qualified students will also be able to complete the application for our Major Admission Awards and the Commitment Scholars program.

Bursaries

Our expanded access initiatives affirm our commitment to reducing the barriers of financial need or personal circumstances and give you the opportunity to say yes to Queen's.

What it is:

A bursary is a financial award, based on demonstrated financial need (not your grades), that you can use for your Queen's education. Unlike a student loan, it is money that you don't have to pay back. Applying is easy. Simply complete your Financial Aid and Awards Profile, available in your SOLUS Student Centre, to be considered for all Queen's need-based awards. You can apply for a bursary right after you apply for admission – we want you to know about your Queen's financial awards before you decide to accept your offer.

What you need to know

1

After you apply for admission, complete your Financial Aid and Awards Profile in SOLUS.

2

By completing your Financial Aid and Awards Profile, you will be considered for all need-based awards offered by Queen's.

3

The recommended date to complete your Financial Aid and Awards Profile is **February 15**.

Major Access Award

Building on our long-standing tradition of promoting access to university, we are offering transformative financial aid to create opportunity for students in greatest need of support throughout their degree. We want our highest-need applicants to be empowered to accept their offer of admission to Queen's.

Program	Value (over 4 years)*
Arts and Science	\$40,000
Health Sciences	\$40,000
Nursing	\$40,000
Engineering	\$60,000
Commerce	\$72,000

Promise Scholars Program

The Promise Scholars program is designed to reduce financial barriers and increase access to Queen's for **first-generation students** from Kingston and the surrounding counties. The program provides dedicated financial, academic, and career support to help you complete your degree. Five awards will be available. You can apply right after you apply for admission by completing your Financial Aid and Awards Profile on your SOLUS student centre.

Admission Bursary

Students who may not qualify for a Major Access Award, but still need funding to assist with financing their education may be eligible for an Admission Bursary. A Queen's Admission Bursary is a non-repayable award based on demonstrated financial need – not your grades.

Program	Value*
Arts and Science	up to \$3,500
Health Sciences/Nursing	up to \$3,500
Engineering	up to \$5,000
Commerce	up to \$6,000
Bader College First-Year	up to \$7,500

Commitment Bursary

A separate Commitment Bursary is available to students entering first year of any first-entry undergraduate degree program who self-identify as a member of an underserved or underrepresented group based on demonstrated financial need. Valued between \$2,000-\$5,000, the Commitment Bursary is renewable for three subsequent years.

Learn more about all bursaries at:

queensu.ca/registrar/financial-aid/bursaries

- * • Values shown for bursaries were in effect at time of publication.
- Queen's University reserves the right to revise any award value without prior notice.
- Renewal conditions apply – see Policy section on the Financial Aid and Awards website for details.

NEED MORE HELP?

The Financial Aid and Awards Office is here to help! Contact us for an in-person or telephone appointment or check out our Financial Aid and Awards website for further information about the programs available to help you succeed!

queensu.ca/registrar/financial-aid 613-533-2216 **entrance@queensu.ca**

Admission Awards

Major Admission Awards

Major Admission Awards are high-value, renewable awards. Criteria include demonstrated financial need, involvement in your school or community, and/or application to a particular program. **They all require an additional application**, and for some awards, you will need to be nominated by your school.

What you need to know

1

Apply to Queen's and complete your Financial Aid and Awards Profile in your SOLUS Student Centre.

2

Apply using the Major Admission Awards application on SOLUS.

3

The application deadline is **December 8**.

Award*	Value (over 4 years)	Number available	Additional Criteria
Bank of Montreal	\$40,000	Up to 5	Financial need
Chernoff Family	\$48,000-\$60,000	11	Financial need, rural/remote
Sobey Atlantic Award	\$80,000-\$120,000	Up to 7	Financial need, Atlantic provinces
Dr. Iris May Marsh Memorial	\$48,000	5	Financial need, Ontario resident
Melvin R. Goodes	\$48,000-\$60,000	2	Financial need, Graduate of Westdale Secondary School
Science 1968	\$48,000	1	Financial need, Ontario resident, Engineering and Applied Science program
Chancellor's	\$48,000	50	Requires high school nomination, academic achievement, community involvement, leadership
Gregory Scholarship in Engineering	\$48,000	1	Requires high school nomination, academic achievement, community involvement, leadership

- * • Values shown for admission awards were in effect at time of publication.
- Queen's University reserves the right to revise or withdraw any award without prior notice.
- Students will not receive more than one merit-based award.
- Renewal conditions apply – see Policy section on the Financial Aid and Awards website for details.

Principal's Scholarship

Queen's Principal's Scholarships are given to students, who are in the top 5% of the competitive admission average* for each direct-entry program. These are scholarships awarded based on your grades only.

** Competitive averages will vary by program, and may also vary from year to year.*

Value:
\$7,000

Commitment Scholars Award

The Commitment Scholars Award celebrates and recognizes demonstrated leadership in, and commitment to, racial justice, social justice, or diversity initiatives by a student in their high school or in their community. Ten awards will be available, each valued at \$48,000 over 4 years. After you apply to Queen's, you can apply for this award by completing the Commitment Scholars application on your SOLUS Student Centre. The application deadline is **February 15**.

Learn more about admission awards at:

queensu.ca/registrar/financial-aid/admission-awards

Indigenous Admission Awards

Queen's offers both merit and need-based financial awards to entering students admitted through the Indigenous Students Admission Pathway. To be eligible for Indigenous-specific Need or Merit-Based Admission Awards you must self-identify during the application process when applying to Queen's via the Ontario Universities' Application Centre (OUAC) and be admitted through the Indigenous Admission Policy.

Other Awards and Funding Opportunities

Indspire's Building Brighter Futures Program

Indspire has provided financial support through more than 66,000 bursaries, scholarships and awards to First Nations, Inuit and Métis students.

Learn more:

indspire.ca/programs/students/bursaries-scholarships

For a complete listing of Building Brighter Futures Supports, please visit indspirefunding.ca.

Additional Queen's Awards

Queen's offers a range of additional awards that are available upon completion of a separate application both on admission to Queen's and throughout your studies.

Learn more about other scholarships and awards at queensu.ca/registrar/financial-aid

Schulich Leader Scholarships

Queen's is proud to be a Canadian university partner of the Schulich Leader Scholarships program.

- Awarded to entrepreneurial-minded high school graduates enrolling in Science, Technology, Engineering or Math (STEM) programs
- Valued at \$120,000 for engineering scholarships and \$100,000 for science, technology, and math scholarships over four years

Learn more: schulichleaders.com

External Awards

External awards are offered by employers and organizations and often look at criteria other than academics, such as athletics, extracurricular activities, leadership, community involvement, volunteer work, and areas of specialization. Some common places to look for external awards are your own or your parents' employer or union, clubs or associations you may participate in, and national award programs. Do your research early! Application deadlines vary.

Earn While you Learn

Working part-time will enable you to contribute to your financial plan, gain valuable work experience, and get involved!

There are lots of options! You might find a job with the Alma Mater Society (AMS), be a campus tour guide, or officiate intramural sports! Downtown Kingston is only minutes from campus, and there are many part-time opportunities in the community.

Queen's Work Study Program

Students with demonstrated financial need will receive priority to apply for certain part-time jobs on campus. You can earn up to \$1,000 per term.

queensu.ca/registrar/financial-aid/application-required/current-students/work-study

Queen's Summer Work Experience Program (SWEP)

SWEP provides eligible Queen's undergraduate students with summer work experience.

careers.queensu.ca/students/services-students/employment-programs/swep

Government Student Assistance Programs

► queensu.ca/registrar/financial-aid/application-required/government



You may be eligible for student financial aid in the form of grants (money you do not have to repay) and loans (money you need to repay when you are no longer studying full-time in a government-approved program).

- Apply for government student financial aid through the province or territory you reside in (not the province where you plan to attend university)
- You must be a Canadian citizen, permanent resident of Canada, or protected person
- You must demonstrate financial need
- You will need to apply for each year of study

Ontario Student Assistance Program

OSAP is Ontario's government financial aid program to help Ontario students pay for college or university.



- You must be a resident of Ontario
- Apply each year as soon as the application is available
- Once you have applied for OSAP, you can get an estimate of the OSAP loans and grants you may be eligible to receive
- Refer to the OSAP website for updated details and deadlines for the upcoming academic year

Learn more

ontariouniversitiesinfo.ca/indigenous-applicants-applying-for-osap

Other Provinces/Territories

- AB ▶ **studentaid.alberta.ca**
- BC ▶ **studentaidbc.ca**
- MB ▶ **edu.gov.mb.ca/msa**
- NB ▶ **studentaid.gnb.ca**
- NL ▶ **gov.nl.ca/education/studentaid**
- NS ▶ **novascotia.ca/studentassistance**
- NT ▶ **ece.gov.nt.ca/en/services/student-financial-assistance**
- NU ▶ **gov.nu.ca/education/fans**
- PE ▶ **princeedwardisland.ca/en/topic/student-loans-bursaries-grants-and-awards**
- QC ▶ **quebec.ca/en/education/student-financial-assistance**
- SK ▶ **saskatchewan.ca/studentloans**
- YT ▶ **yukon.ca/en/education-and-schools-student-financial-support**

Career Services

► careers.queensu.ca

Our Career Services team will support and empower you to design a rewarding career journey that leverages your education and skills so you are ready to make a positive impact in the world.

- Engage in experiential learning opportunities to gain relevant experience and transferable skills
- Meet employers from hundreds of organizations at career fairs and campus events
- Access thousands of job postings
- Connect with Queen's diverse and global alumni network to get insider career advice

Speak to Career Educators and Coaches who can support you in:

- Exploring career and further education options
- Writing compelling resumes, cover letters, and applications
- Preparing and practicing for interviews



Queen's Undergraduate Internship Program (QUIP)

careers.queensu.ca/quip

- For second or third-year students
- Gain valuable work experience before you graduate
- Engage and collaborate in significant projects over a 12-16 month work term
- Test drive your career choice and build your professional network in a field/industry of your choice
- Return to your final year of studies
- Average salary of \$50,000

"My internship experience was probably one of the best experiences of undergrad. It provided me with the chance to meet new people, work flexible hours, travel, and discover what type of career path I want to pursue moving forward."

**Anwar, Applied Economics,
Statistics Canada**

"Completing an internship was the best thing I could have done for myself! I was able to learn about the industry I envisioned myself entering, and I now get to graduate with 12 months of professional work experience."

**Candace, Gender Studies,
Student Affairs, Queen's University**

"This internship has provided me with invaluable opportunities to accelerate my career and my professional and personal development. I would have never expected such an enriching experience and I am pleased to have taken part in a QUIP internship."

**Natalie, Mechanical Engineering,
National Research Council (NRC)**

SAMPLE PAST INTERNSHIPS

Ontario Power Generation

Engineering and Applied
Science Intern

Goldcorp

Corporate Development
Intern

Environment and Climate Change

Canada Notifications
Support Officer Intern

CIBC

Business Analyst Intern

**Ministry of
Transportation** Ontario
Planner Intern

IBM

Software Developer

Sanofi Pasteur

Patient and
Provider Intern

Statistics Canada

Junior Analyst Intern

Kings Distributed Systems

Events and
Communications
Coordinator

City of Kingston

Environmental
Project Intern

Convocation

At the end of your undergraduate studies, you will graduate with a Bachelor's degree and enter a world of possibilities. You may go directly to a career or begin further studies in a graduate or professional program. Regardless of what you do, you will be part of an alumni network of more than 150,000 graduates world-wide. When you meet a "Queen's grad" on the street, or in the board room, you will have an immediate connection over the shared experience at Queen's.





**Queen's University is situated on the territory
of the Haudenosaunee and Anishinaabe.**

**Ne Queen's University e'tho nonwe ne Haudenosaunee
tanon Anishinaabektehatihsnonhsahere ne ohonsta.**

**Gimaakwe Gchi-gkinoomaagegamig atemagad
Naadowe miinwaa Anishinaabe aking.**



Queen's
UNIVERSITY

Undergraduate Admission
and Recruitment

Online events: queensu.ca/admission/tours-and-events/online-events

Virtual campus tour: queensu.ca/admission/campus-tours

Queen's University, Undergraduate Admission and Recruitment
Gordon Hall, 74 Union Street, Kingston, Ontario, Canada K7L 3N6

queensu.ca/admission admission@queensu.ca

@@queensuar QueensUndergradAdmission



Viewbook